

RESEARCH PROGRESS

AFFORDANCES OF SCHOOL GROUNDS IN MALAYSIA FOR CHILDREN'S OUTDOOR ENVIRONMENTAL EDUCATION

Nor Fadzila Aziz

PB103013

PhD Candidate

Supervisor: Ismail Said

RESEARCH AIM

- To explore the affordances (children's outdoor experiences and perception on the use) of primary school grounds as site for children's outdoor environmental education, which may contribute to their environmental knowledge and awareness.

RESEARCH OBJECTIVES AND QUESTIONS

To explore the affordances of the school grounds from children's perspective

- How do the school grounds are being use by the children according to the “3 domains of education”?
- How do the activities occur in the school grounds contribute to children's environmental knowledge and awareness?

To identify the factors that influence the level of affordances in the school grounds

- How do the settings, features, designs and cultures of the school grounds influence children's activities in the school grounds?

To explore the children's and teachers' perception on the use of school grounds for outdoor environmental education purposes

- What are their opinions and attitudes on the use of school grounds for outdoor environmental education?

To identify the planning and design parameters of school grounds those permit children's outdoor environmental education

- How do the school grounds' environment can be improved based on children's and teacher's perception?

RESEARCH METHODOLOGY

	RESEARCH QUESTIONS	METHOD	RESPONDENT
	Environment-behaviour dimensions		
1 THE USE OF SCHOOL GROUND	<ul style="list-style-type: none"> • What that group • What th • How and for t • Where the school ground. <p>Design & features</p> <p>Activities</p> <p>Affordances</p> <p>Favourite Places</p>	<ul style="list-style-type: none"> • Inventory • Mapping & Walkabout interview • Photo taking 	<ul style="list-style-type: none"> • Schools • Children
2 ENVIRONMENTAL EDUCATION	<ul style="list-style-type: none"> • What valu from ou <p>Knowledge</p> <p>Awareness</p>	<ul style="list-style-type: none"> • Group discussion 	<ul style="list-style-type: none"> • Children

Session 1
Day 1

RESEARCH METHODOLOGY

<p>3</p> <p>INFLUENTIAL FACTORS</p>	<ul style="list-style-type: none"> • What child in the • What • What • What 	<p>SG Design</p> <p>SG features</p> <p>SG cultures</p>	<ul style="list-style-type: none"> • List • Analysis of RQ 1 	<ul style="list-style-type: none"> • Children
<p>Perceptual dimensions</p>				
<p>4</p> <p>THE USE OF SCHOOL GROUND FOR OED</p>	<ul style="list-style-type: none"> • What and r • What • What • What • What • What • What 	<p>Perception</p> <p>Attitude</p> <p>Influential factors</p>	<ul style="list-style-type: none"> • Survey • Survey & Semi-structured interview 	<ul style="list-style-type: none"> • Children • Teacher
<p>5</p> <p>SCHOOL GROUND IMPROVEMENT FOR OED</p>	<ul style="list-style-type: none"> • What • What • What • What 	<p>SG design</p> <p>SG features</p>	<ul style="list-style-type: none"> • Drawing • Semi-structured interview 	<ul style="list-style-type: none"> • Children • Teacher <p>(n=40/school, N=80)</p>

Session 2
Day 2

RESEARCH FRAMEWORK

SG COMPONENTS

SG DESIGNS

Space
Size
Form
Features
Connectivity
Accessibility
Context

SG FEATURES

Availability
Diversity
Complexity
Dynamic

SG CULTURES

Policy
Rule & regulation
Management
Maintenance
Social dynamics

AFFORDANCES

PERCEPTION

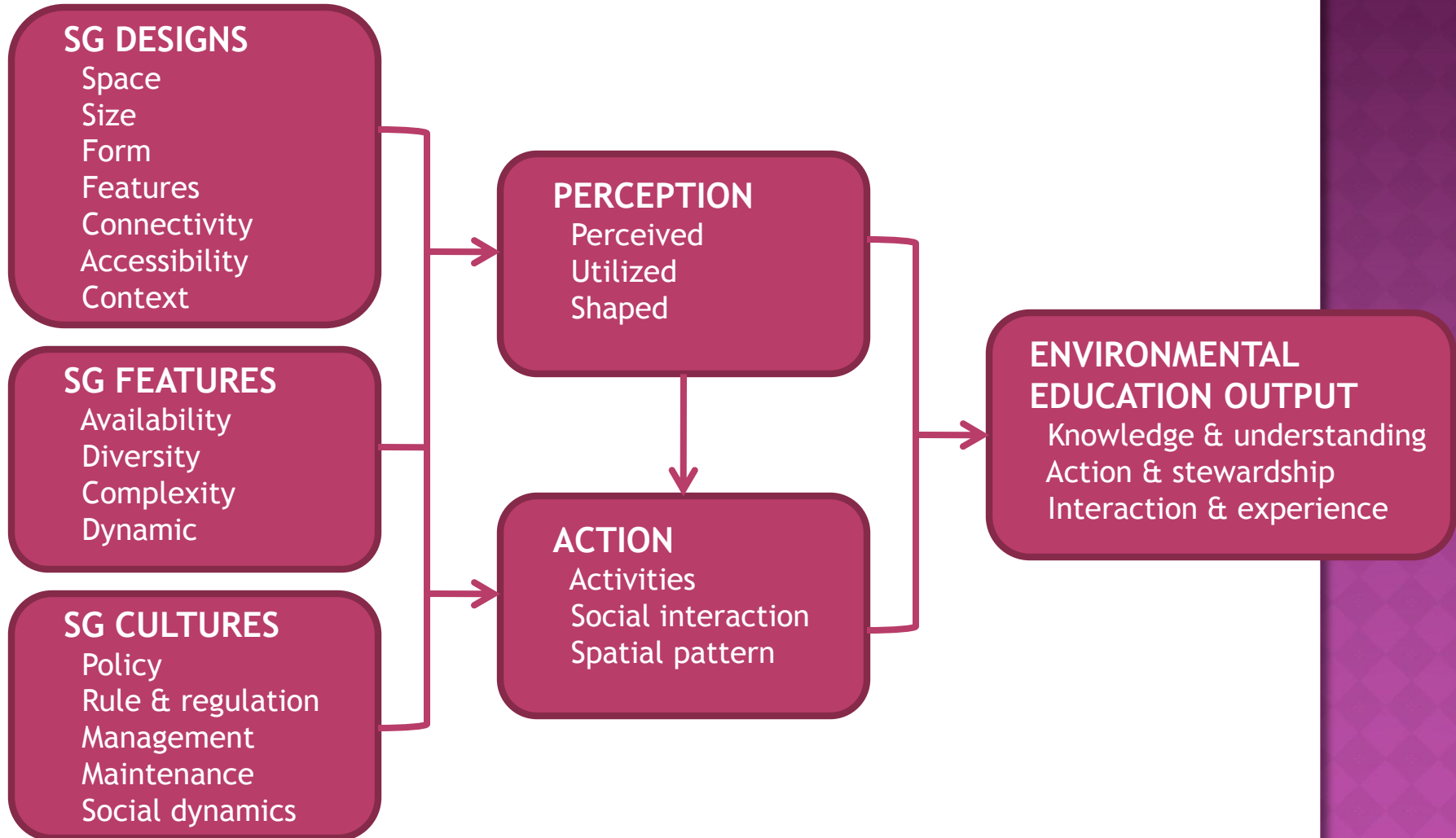
Perceived
Utilized
Shaped

ACTION

Activities
Social interaction
Spatial pattern

ENVIRONMENTAL EDUCATION OUTPUT

Knowledge & understanding
Action & stewardship
Interaction & experience



RESEARCH SCOPE

Respondents

- Middle childhood children aged 8-11-year old (n=80)
- Teachers (n=30)

Study sites (Selection criterion)

- 2 primary schools in Johor (National School) representing urban and rural school.
- Schools participated in “Sustainable School - An Environment Award 2009/2010” program.
- Distance from UTM not more than 40km.
- School area between 2-6 acres.

CURRENT RESEARCH PROGRESS

○ Current progress

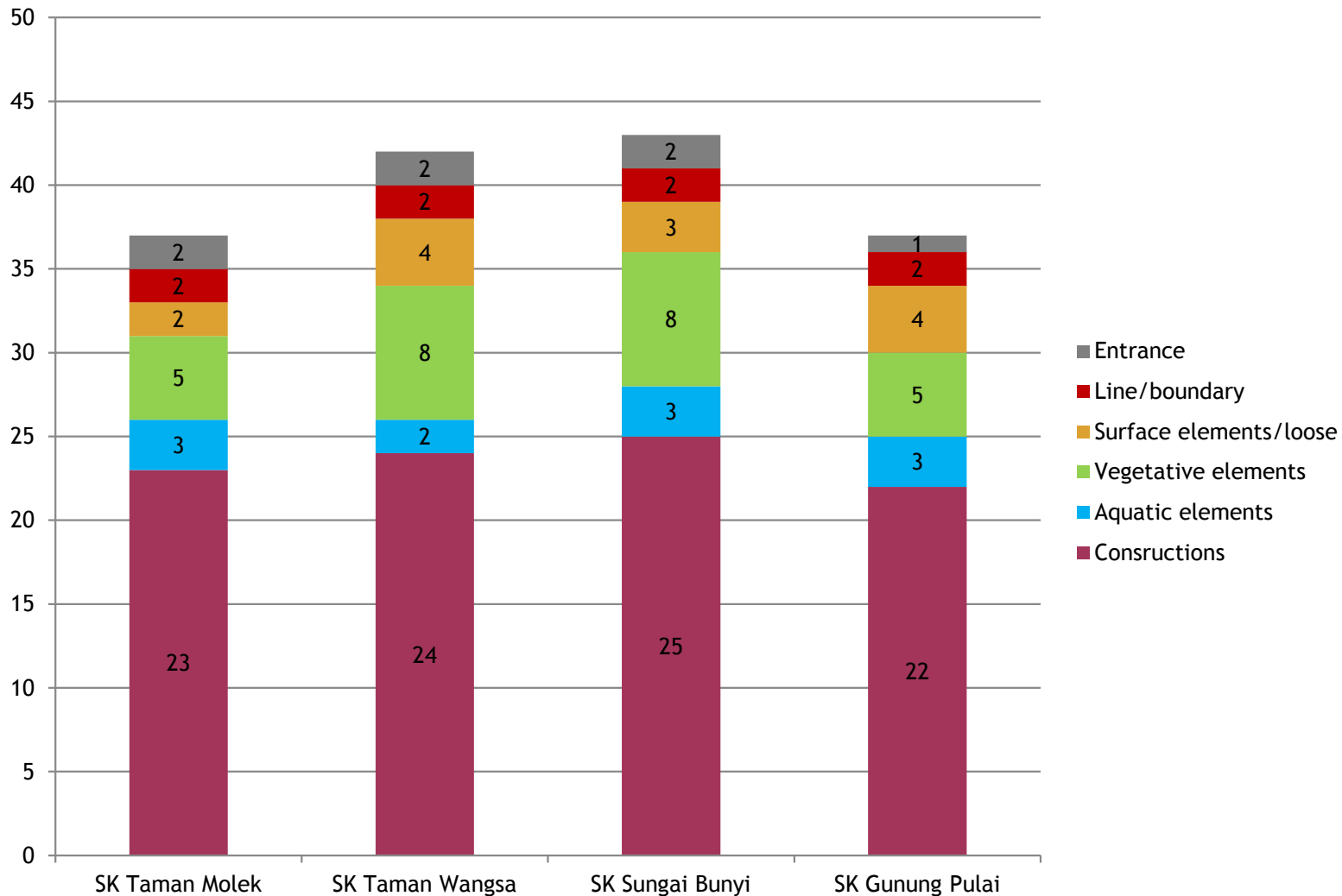
■ Paper submitted:

- Nor Fadzila Aziz & Ismail Said (2011). The Trends and Influential Factors of Children's Use of Outdoor Environment: A Review. *Asian Journal of Environment-Behaviour Studies* 2(5), 67-78. (Later to be published in *Procedia Social and Behavioral Sciences*, Elsevier)
- *Children's Preference for School Ground Elements: A Pilot Study*, 6th SEATUC Symposium, King Mongkut's University of Technology Thonburi, Bangkok, Thailand, 6-7 Mac 2012. (Accepted by the secretariat)

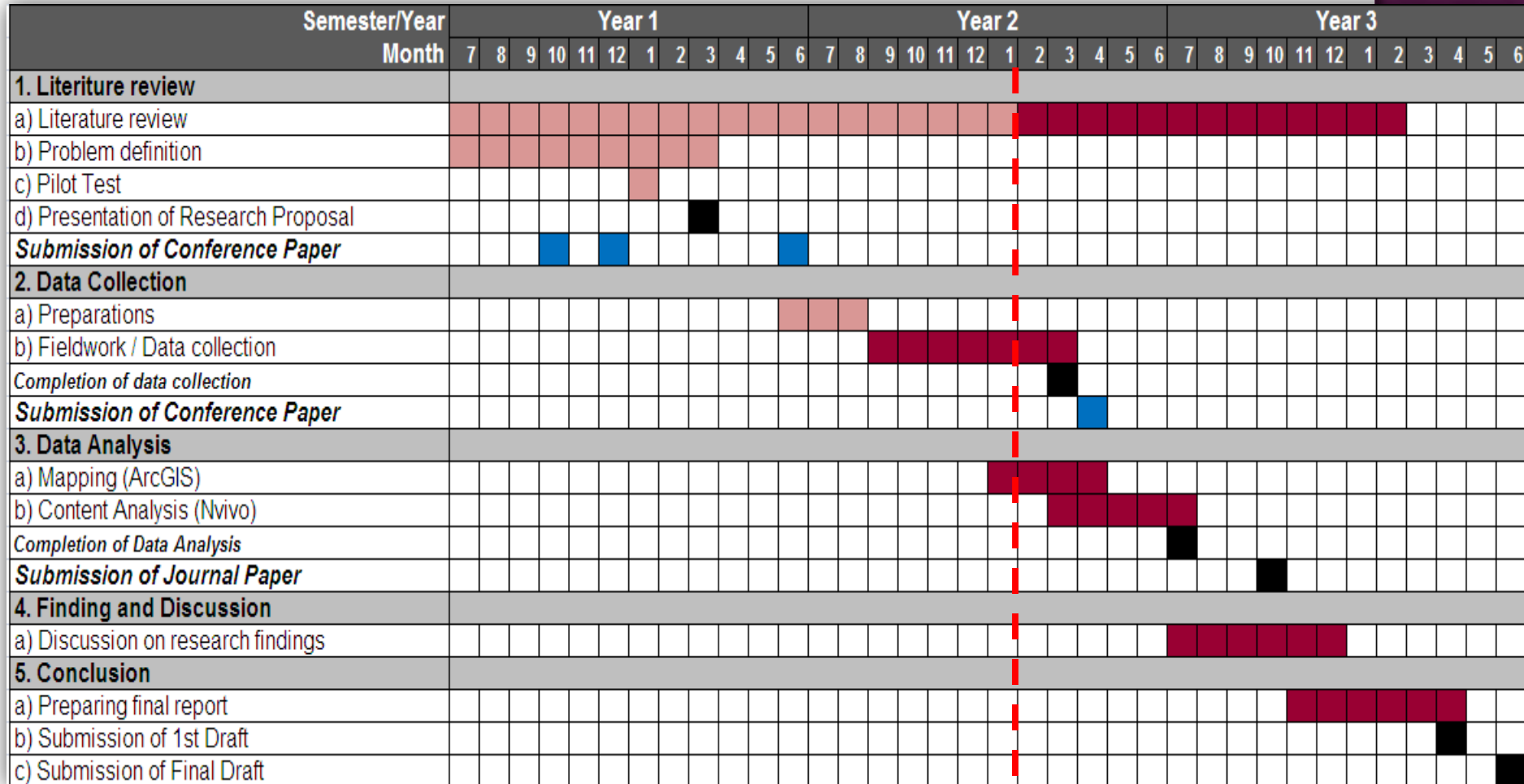
■ Preparation for data collection

- Permission to conduct research: 1) Already obtained from MOE and Education Department of Johor , 2) in the process of getting permission from Headmasters of selected schools.
- Pre-assessment of the SG design and features at 4 primary schools in Johor.
- About to conduct a preliminary study, before conducting real fieldwork (February-Mac 2012).

FINDINGS (SG PRE-ASSESSMENT)



GANTT CHART (PLANNED & PROGRESS)



RESEARCH PROBLEMS

- ◉ Long procedure in getting permission from Ministry of Education Malaysia, Education Department of Johor and School Headmaster leading to delay of data collection schedule.
- ◉ Need to attend courses related to GIS and Nvivo.

THANK YOU